



**EXPAND YOUR CUSTOMER EXPERIENCE AND
FOOTPRINT ANYWHERE IN THE WORLD.**



We Work As A Team.



T Trust

Trust is the **foundation** on which our team is built. Planes works hard every day to build trust not only with every customer, but with every team member.

E Empowerment

Our team members are **empowered to make decisions** that affect the positive customer experience of Planes. Our leaders convey trust by empowering their team members to take responsibility for their performance.

A Accountability

Our team members are **accountable for their actions, performance and success**. Our leaders are accountable for the performance and success of their team and for providing a work environment that is built on trust and respect.

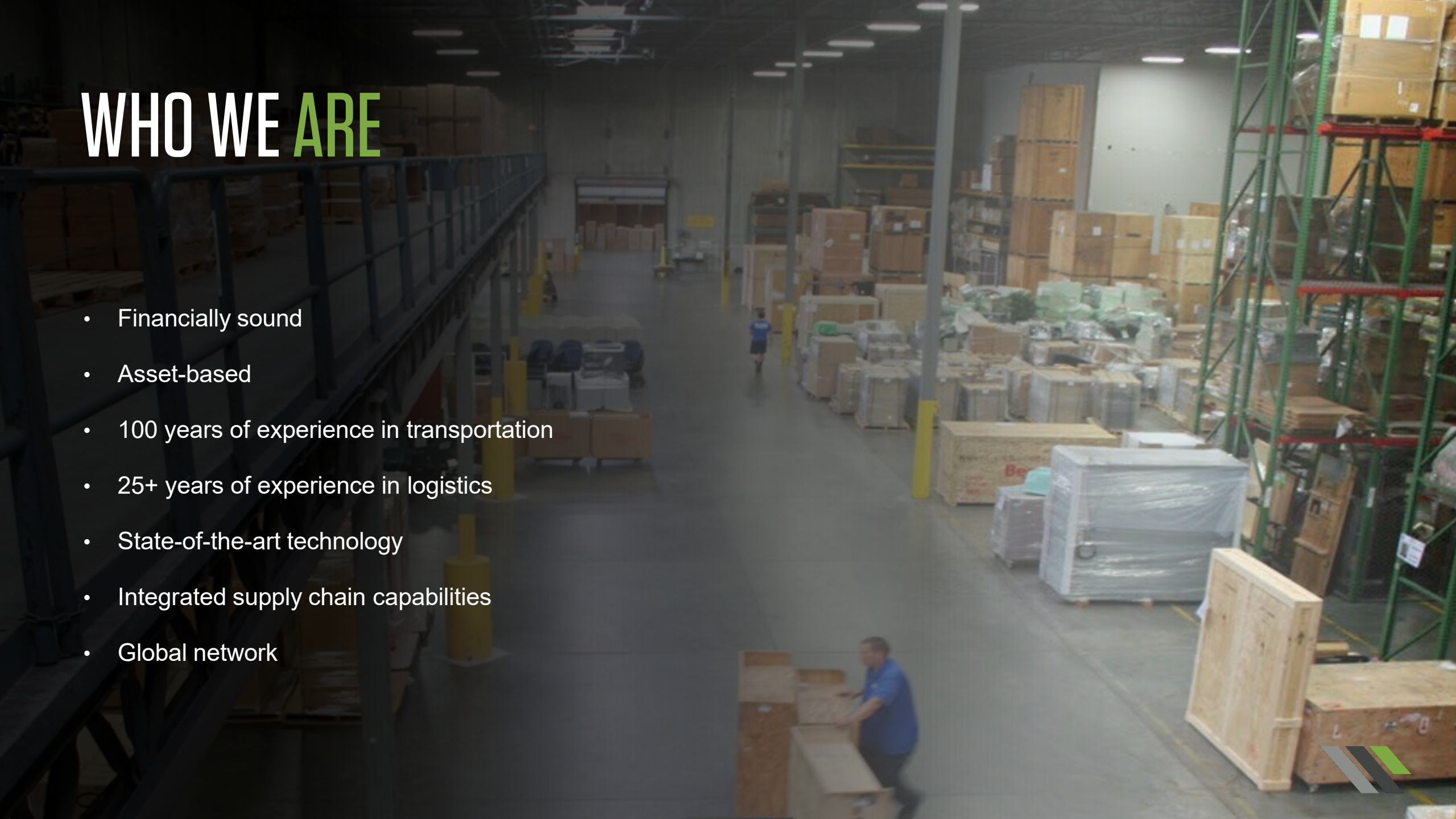
M Mesh

Planes is committed to **bringing different cultures, age groups, experiences & skillsets together**. By blending everyone's talents & strengths – and ensuring that **every team member knows his or her role** – we get the best possible performance out of the team to serve our customers' needs.

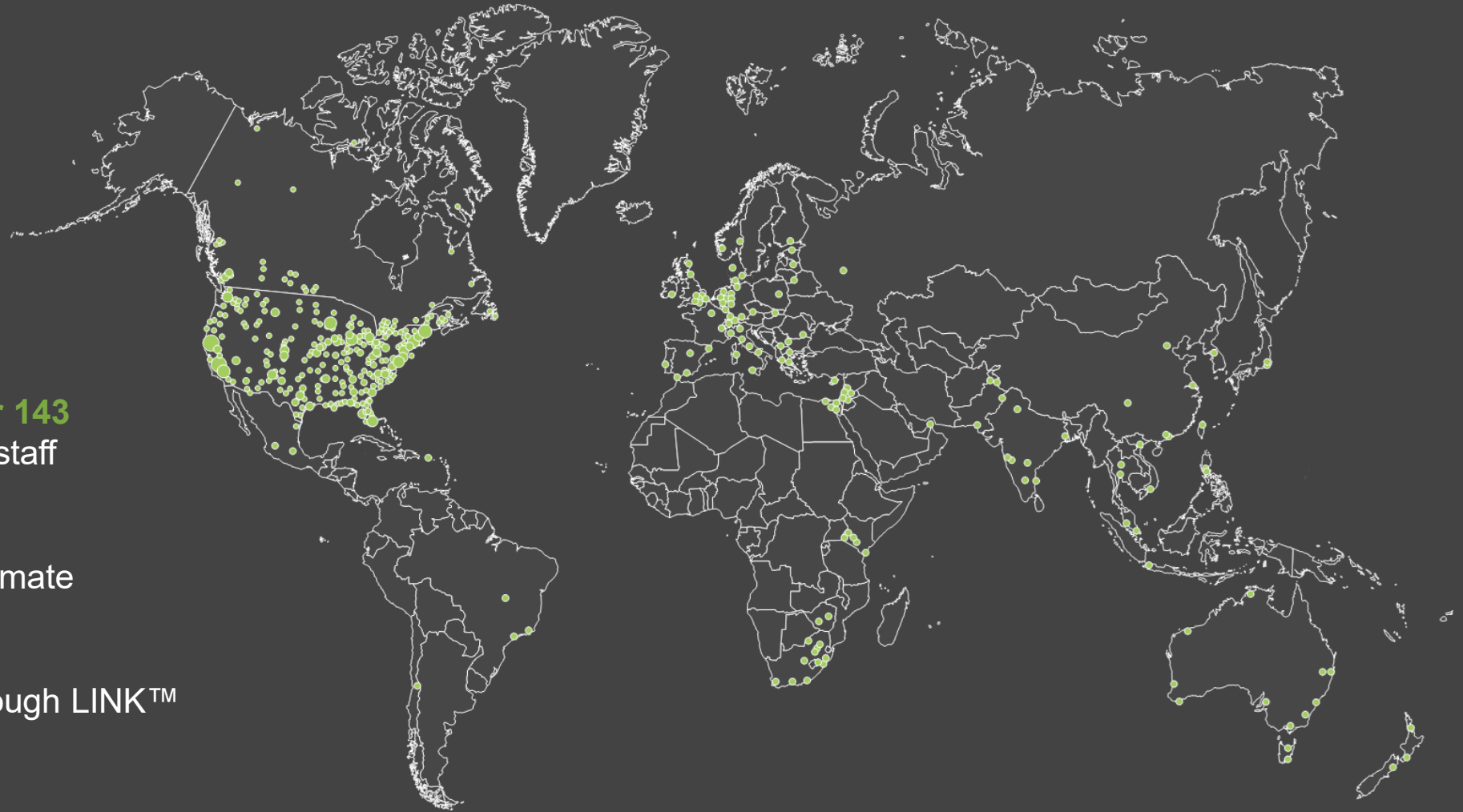


WHO WE ARE

- Financially sound
- Asset-based
- 100 years of experience in transportation
- 25+ years of experience in logistics
- State-of-the-art technology
- Integrated supply chain capabilities
- Global network



WE CAN GO WHERE YOU GROW: GLOBAL CAPABILITIES



- 750+ service centers in **over 143 countries** with over 50,000 staff
- 46+ million square feet of secured & temperature-climate controlled warehousing
- Manage project lifecycle through LINK™ technology
- Consistent quality standards across entire network

TRANSPORTATION MANAGEMENT

- 6,500 power units
- 10,000 trailers
- 4,484 straight trucks
- Additional capacity via vetted network partners
- Temperature & relative humidity controlled
- Lift gates
- Full decking
- Pads & straps
- Multi modal
- Global coverage
- Single point of contact



CONSOLIDATION & DECONSOLIDATION

- Receiving and handling of freight
- Temperature & relative humidity controlled storage
- Increased flexibility
- Detailed reporting
- Custom crate building
- Local storage & warehousing



FINAL MILE SERVICES

- Time specific delivery
 - After hours & before hours
 - Nights & weekends
- Local warehousing
- General contractor coordination
- Local project management
- Specialized equipment
 - Liftgates
 - Pads & Straps
 - Load Bars



WHITE GLOVE DELIVERY

- Professional installation & assembly
- Specialized vehicles & equipment
- Inside pickup & delivery
- Debris removal
- Quality assurance processes
- Experienced and trained labor



DEDICATED TEAM

- Daily project management
- Organize, track & arrange all services for the project
- Monitor all costs & advise client of controlling options
- Ensure that all client requirements & expectations are met



DEDICATED WAREHOUSE SPACE

- 350,000 sq ft
- Six program-specific FTEs
- Gated property, alarm system, fire suppression system
- Proprietary Warehouse Management System (WMS)
- Dedicated floor space and staging locations



powered by
LINK™

STAY CONNECTED, WITH LINK™

Introducing LINK™, an interactive technology platform that connects people and information like never before.

This true information integration joins you to the jobsite, giving you views to your project that are only possible through LINK™.

By giving you unparalleled visibility to your projects, LINK™ transforms the way you work.



LINK™ TECHNOLOGY FOR COMPLETE SUPPLY CHAIN VISIBILITY

From new stores to remodels to closings, LINK™ reports & dashboards keep you connected at every phase.

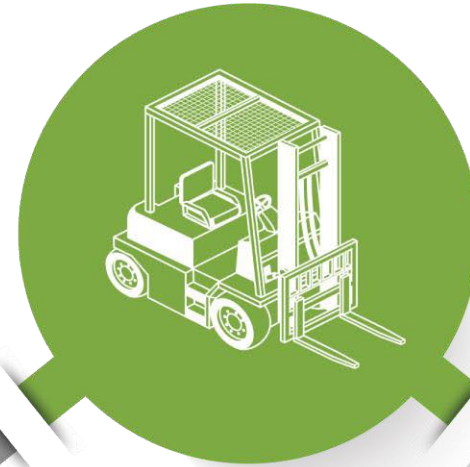
Logistics/Procurement Integration

- ERP Platform connectivity
- Customized third party access



Freight Management

- Global visibility
- Real-time updates



Final Mile & White Glove Delivery Services

- Mobile compatibility
- Photo documentation



Inventory Planning & Management

- Centralized data
- Permissions-based, shared workspaces



FF&E Receiving, Warehousing, & Delivery

- Custom status updates
- Threshold-based notifications
- Digital inventory catalog



ENVIRONMENTAL STEWARDSHIP

Through our partnership with an award-winning, woman-owned, 501(c)(3) company, we match and steward office furniture, appliances, supplies, and building materials back to the community, serving local schools, non-profits, and public agencies.

In addition to impacting the triple bottom line (People, Planet, Prosperity), clients' decommissioning results are independently audited, resulting in a detailed tax receipt for donations. Clients also receive a certificate detailing the total landfill diversion in metric tons as well as separate categories the surplus took through reuse, resale, repurpose, and recycle.



THANK YOU

Contact:

John Muenzer

VP of Business Development

Cell: 847-343-8222

jmuenzer@planescompanies.com

planes-specializedlogistics.com

